



## **Arboretum Accreditation Process Update**

By Michael Higgs & Davey Tree Expert Company

The Cave Hill Heritage Foundation is excited to provide an update on our progression in Phase One of the Arboretum Accreditation Project. Beginning several months ago, our first task in the process was to conduct a full tree inventory of the 296-acres that compose Cave Hill Cemetery. To achieve this goal, we immediately partnered with The Davey Tree Expert Company, an industry leader in the arboricultural community.

Since mid-July, our entire arboreum accreditation team has invested hundreds of hours in the careful review and recording of information. Our consulting arborist, with Davey, has walked miles and miles, carefully inspecting every tree, adding a numerical count tag (assessment number tag), and entering information into a computer database.

As of mid-November, 5,592 trees were officially recorded over 217 acres. It is anticipated that there are between 2,000-3,000 additional trees to catalog in the remaining 79 acres. Of these trees we are seeing trends in the following genera, which constitute 59.3% of the entire inventoried grounds tree population.

Ilex (holly): 11.4%

Cornus (dogwood): 10.6%

Acer (maple): 9.3%

Magnolia (magnolia): 6.4%

Quercus (oak): 5.0%

Tsuga (hemlock): 5.0%

Cercis (redbud): 3.4%

Aesculus (buckeye/horsechestnut): 2.6%

Picea (spruce): 2.3%

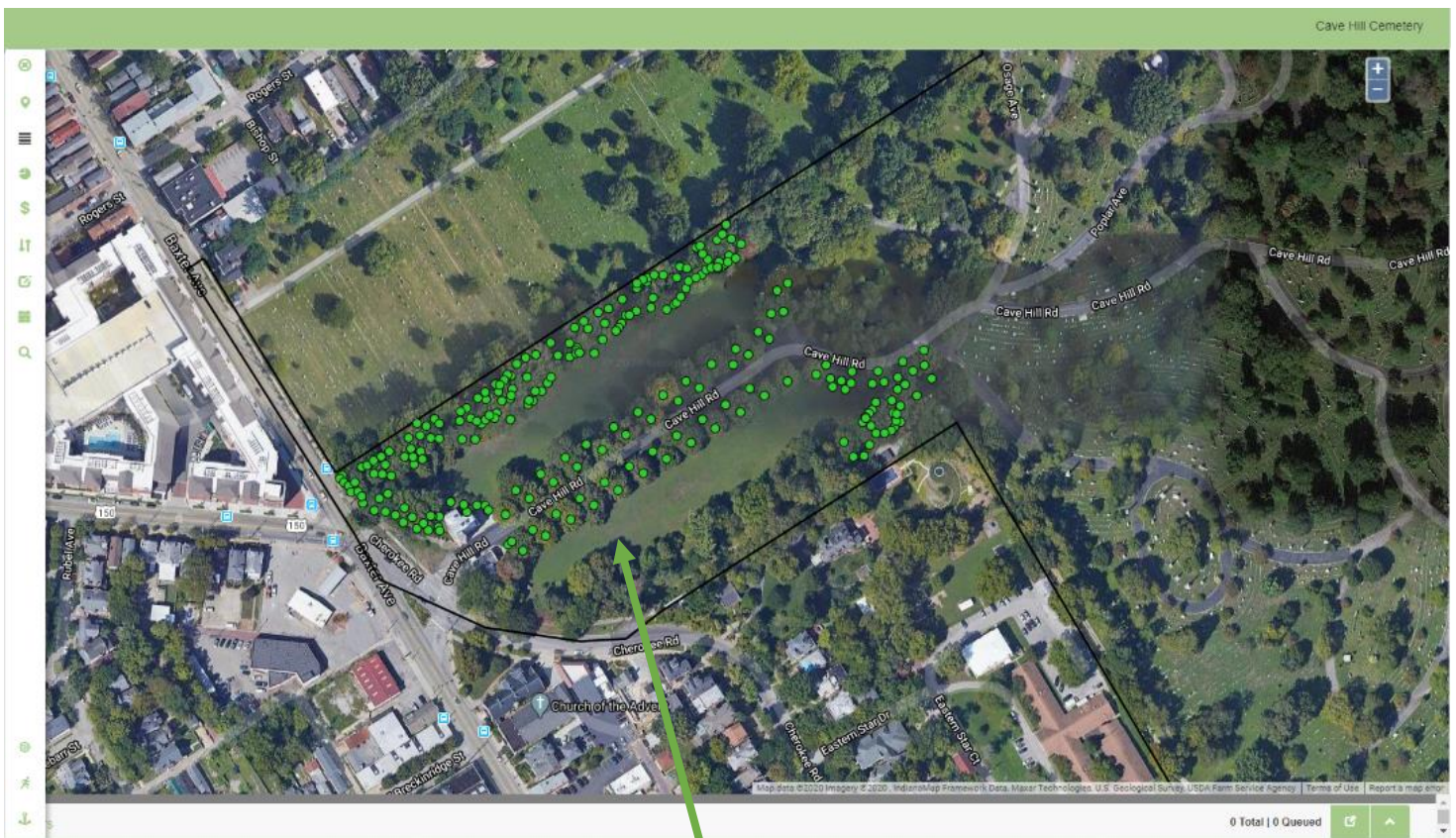
The grounds inventory, barring weather challenges, should be complete by mid-January. At that point, our team will begin to formalize our written arboretum plan and set a roadmap for the future management of the arboricultural setting within Cave Hill Cemetery.

Our team could not be more excited to see the progression of our grounds inventory and to fully understand the components of the entire tree collection. We are equally excited to deliver a new range of program content as we continue to learn more about one of the wonderful green spaces in the heart of our city.

Courtesy of The Davey Tree Expert Company, here is a map of our progression in the grounds tree inventory process:

### Aerial Comparison from July to November of the ground inventory progress

July Aerial Image:



Baxter Avenue Entrance  
Avenue



November Aerial Image:



Area remaining for inventory.